

4G MV730G User Manual V2.0

Learn how to set up your new MiCODUS Tracker

1. Main Features



4G LTE+
2G GSM



GNSS+LBS



Remotely Cut Off
/Resume Fuel



Realtime
Tracking



Historical Route
Playback



Vibration
Alarm



9-95V Wide
Working Voltage



ACC Status
Detection



Tow Alarm



Power
Disconnect Alarm



Geo-fence



Engine On/
OFF Alarm



Auto Arm
by ACC



Overspeed
Alarm



Tracking Platform



iOS & Android

2.Specifications

Device Information	Model	MV730G
	Weight	40g
	Dimensions	72x30x34mm
	Battery	Built-in 80mAh Lithium Battery
Working Parameters	Working Voltage	9-95V DC
	Fuel Pump Power Line Voltage	5-30V DC
	Fuel Pump Power Line Current	Max 60 amps (Normally 20 amps)
	Working Power	Working Power: 1.2w; Sleep Power: 0.025w
	Working Temperature	-20 C - 60 C
Cellular Specifications	Working Humidity	5%-95%RH
	Working Frequency	2G GSM/GPRS: 850/900/1800/1900MHz 4G LTE CAT1: B1/B2/B3/B4/B5/B7/B8/B12/ B13/B18/B19/B20/B25/B26/B28/B66/B34/ B38/B39/B40/B41
	Cellular Antenna	Built-in
	SIM Card	Nano Size
GNSS Specifications	GNSS	GPS+GLONASS+BDS+GALILEO+QZSS +SBA(WAAS, EGNOS, GAGAN, MSAS)
	Hot/warm/cold Start	<3s, <35s, <45s @ Open Sky
	GNSS Antenna	Built-in Ceramics GNSS Antenna
	Positioning Type	GNSS+LBS+AGPS
Accuracy	GNSS Accuracy	<5M @ Open Sky
	LBS Accuracy	200-2000m (Depend on density of base stations)

3.How to manage the tracker to get online?

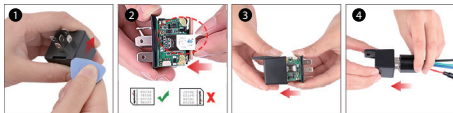
Step 1 SIM card requirements



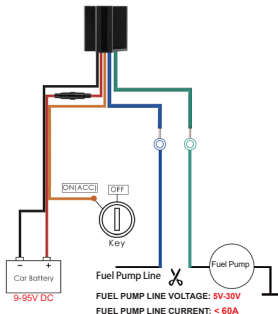
Please get a suitable SIM card from your local place. The SIM card must meet below points:

- ◆ It must be compatible with the 4G LTE or 2G GSM network
- ◆ Please enable SMS, call, internet data traffic of the SIM card
- ◆ Enable the caller ID display feature
- ◆ Remove the PIN code
- ◆ Use Nano size SIM card for the tracker
- ◆ Please inquire the SIM card provider for the exact correct APN information

Step 2 SIM card installation



Step 3 Wiring



NOTE ⚠⚠⚠ : After installed SIM card correctly , it is very important to connect the tracker with external power no less than 12V for power supply before operation!

Step 4 Configure APN

Please get the exact correct APN name from local SIM card provider. Take the tracker to a good signal place for operation and configure the APN for it as below:

SMS Command Format	Reply	Example	Note
apn,apn name	apn ok	apn,cnmet	If the APN information doesn't have APN user and APN password then please use this command
apn,apn name, apnuser,apnpassword	apn ok	apn,orange,orange, orange	If the APN information has APN user and APN password then please use this command

Note: Please get the exact correct APN name from local SIM card provider. The APN information is very important, it must 100% correct to match with the sim card of the tracker, if you configured wrong APN, the tracker also will reply "SET APN ok" but it will can't get online!

Step 5 Indicator status description

LED	Event	State
GSM LED (GREEN)	Searching for network	Solid
	Network has been registered	Flash every 1 second
GPS LED (Blue)	GPS is in fixing	Solid
	GPS has fixed	Flash every 1 second
ALL LED	Device is working but stopped more than 5min	ALL LED TURN OFF
	Device has not been turn on	
	Device ran out of battery	

4. Package Content

GPS Main Unit	x 1
Function Cable	x 1
Pick	x 1
Harness	x 1
User Guide	x 1
Genuine Packing Box	x 1

5. Functions Explanation

Please follow with the quick user guide carefully!

a. Vibration Alert:

This vibration alert function just work under stationary status. How to use this function:

Step 1: Set admin number by this sms command:

admin123456,number with country code

Step 2: Enable the device to enter into arm mode by this sms command: **111**

Step 3: Configure the alarm ways by this sms command: **vib,2,4**

Step 4: Keep the device under stationary status more than 5min to let it enter into sleep arm mode;

For example:



Step 5: Vibrate the device then the tracker will send the vibration alarm messages

NOTE ⚠️⚠️⚠️ :you also can configure more two SOS numbers for the tracker, the alarm messages also will be sent to them!

For example:



b. Cut Off Fuel/Resume Fuel

Step 1: Set admin number by this sms command:
admin123456,number with country code

Step 2: Choose the cut off fuel mode you want:

Safely cut off fuel mode: **cutoil123456,0**

Immediately cut off fuel mode: **cutoil123456,1**

Step 3: Send this sms command from the admin number to cut off fuel: **555**

NOTE ⚠️⚠️⚠️ :About the cut off fuel function, firstly please make sure the fuel circuit is connecting to main power. About the cut off fuel function, firstly please make sure the fuel circuit is connecting to main power. Secondly, it has 3 different performance, please read it carefully:

For safely cut off fuel mode, it has 3 different performance, please read it carefully:

- * If the network signal and satellite signal both are available, when the equipment speed exceeds 20km/h, the fuel circuit will not be cut off immediately, it will cut off intermittently till the speed is below 20km/h, then just can be completely cut off.

- * In the tracker has network signal and but no satellite signal, the fuel circuit will be cut off intermittently, after 2, 3 minutes it will be cut off completely;

- * If the tracker stopped more than 5 minutes, the fuel circuit will be cut off immediately, and then connected, but if you vibrate the tracker or vibrate the tracker the fuel circuit will be cut off immediately;

For immediately cut off fuel mode, it will cut off fuel completely under any conditions only if the device has signal.

c. Engine On/Off Alarm

Step 1: Set admin number by this sms command:
admin123456,number with country code

Step 2: Configure the alarm ways via this sms command:
autorep123456,AB

A=0 (Engine ON: No Alarm);

A=1 (Engine ON: SMS only);

A=2 (Engine ON: Platform only);

A=3 (Engine ON: SMS+Platform)

B=0 (Engine OFF: No Alarm);

B=1 (Engine OFF: SMS only);

B=2 (Engine OFF: Platform only);

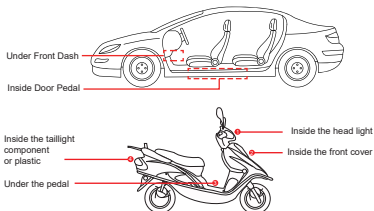
B=3 (Engine OFF: SMS+Platform)

For example:



NOTE ⚠️⚠️⚠️ :you also can configure more two SOS numbers for the tracker, the alarm messages also will be sent to them!

6. Installation Recommendation



- 1) The device should face up to the sky.
- 2) Metal thermal barrier or heating layer of the windshield affects the signal.

7. Troubleshooting

Type	Use
Unable to connect to tracking platform	Check the APN and settings. Check whether the data service of SIM card is enabled. Check the balance of SIM card.
Tracker shows offline	Check whether external power is still connected. Check if the vehicle entered network blind area. Check the balance of SIM card.
Unable to locate	Make sure the top side facing upward without metallic things shielded. Make sure it's not in area with no satellite coverage.
Location drift	In area with poor GNSS signal (tall building around or basement), drifting may happen. Check whether vibration happens around to trigger the accelerator.
No command reply	Make sure command format is correct. Vehicle may be in network blind area. Make sure SIM card is well inserted and has SMS service.

8. Full SMS Commands List

Functions	Command Format	Explanation
Query Commands		
Parameter Query	param,1	firmware version、ID、IP、port、domain、APN
	param,2	admin number, SOS number,move distance, overspeed, auto arm time, auto disarm time, alarm interval
Status	status	BAT:10 GPRS: GSM: GPS:A/V ACC:on/off oil:on/off power:on/off
IMEI Checking	imei123456	
Check Command Password	getpsd	
Google Maps Link	G123456# or where	V:A: Indicates the device has GPS signal; V:V: Indicates the device doesn't have GPS signal; 2019-11-26 10:17:01: Date and Time; S: 000km/h: Speed of the tracker Bat:5: Battery level of the backup battery of the tracker, it has 6 levels: "6" means 100%, "5" 80%, "4" means 60%, "3" means 40%, "2" means 20%, "1" means 10%; ACC: off: The status of the car engine; 720100006: ID number of the device; S26: GSM signal is 26 G06: GPS signal is 06 p:46000, l:13152, c:63162: p,l,c this 3 parameters means the LBS code
Setting Commands		
Set Admin Number	admin123456,number	Example: admin123456,00861356669999 Please add your country code as prefix of the admin number
Set SOS Numbers	SOS,SOS1,SOS2	Example: SOS,008613566668888,008613566669999 Please add your country code as prefix of the admin number
Back to Factory Setting	begin123456	After sent this sms command, all your configuration will be cleared and the device will get back to factory default settings
Command Password Change	setpwd123456,new password	The password just can be 6 digitals
Restart	rst	After sent this sms command, the configurations will be saved and the device will restart
Data Traffic Switch	gprs123456,A	A=1 ON ; A=0 OFF; Default: 1

Functions	Command Format	Explanation
APN	apn,apn content,apnuser,apnpasswd	Example: apn,orange,orange,orange Please get the exact correct APN name from the SIM card provider of the tracker!!!! For example: apn,orange,orange,orange
	apn,apn content	Example: apn,internet If the SIM card operator doesn't have APN user and password, then you can ignore it!!!! For example: apn,cnmet
IP/Domain&Port	adminip123456, ip/domain name:port	Example: adminip 123456,47.254.77.28:7700 or adminip 123456,d.micodus.net:7700 Micodus tracking platform: Domain name: d.micodus.net, IP: 47.254.77.28, Port: 7700
Data Upload Frequency	upload123456,A	Example: 1. upload123456,10 (Means the device will upload data every 10s under moving status and heartbeat data every 3min under static status) 2. upload123456,1800 (Means the device will upload data every 1800s under both moving status and static status) A: Time interval value: 1-3600s; if A is less than 600s, for example, A=10s, then device will upload data every 10s when moving, after the car stop more than 5min, it will just upload heartbeat data every 3min; if A is more than 600s, for example, A=1800s, then the device will upload data according to 1800s under both moving and stationary status
Time Zone	timezone123456,A	If west time zone, you need input sign "-"; for example: timezone123456,-4; if east time zone, then needn't input sign "+", for example: timezone123456 8
Arm	111 or SF	
Disarm	000 or CF	
Cut Off Fuel Mode	cutoil123456,A	Example: If you want to cut off fuel immediately, please send below two commands: Firstly send: cutoil123456,1 Secondly send: 555 If you want to cut off fuel safely, please send below two commands: Firstly send: cutoil123456,0 Secondly send: 555 A=0-1: 0: Cut off fuel safely; 1: Cut off fuel immediately
Cut Off Fuel	555	cut oil ok
Resume Fuel	666	resume oil ok
Auto Arm By ACC	accdt,time	Example: accdt,30 (Means the tracker will enter into arm status automatically after engine off 30s) Time scope: 5-1200 seconds

Functions	Command Format	Explanation
Sleep Mode	sleep123456,time	If device keep stationary more than 5 minutes the device will enter into sleep mode automatically, sms commands and call can wake up it
	sleep123456,shock	If device keep stationary more than 5 minutes the device will enter into sleep mode automatically, vibration, sms commands and call can wake up it
	sleep123456,off	Cancel sleep mode
Alarm Setting Commands		
Movement Alarm	move,<distance(m)>,[mode]	Example: move,300,1 (Means if the tracker was moved 300m it will send alarm message to admin and sos numbers via platform and sms) Move distance 100-3000m; Mode:1-4: 1. Platform+SMS; 2. Platform+Call; 3. Platform+SMS+Call; 4. Platform only Default: 4
Overspeed Alarm	speed,<over speed value>,[mode]	Example: speed,100,1 (Means if the speed of the tracker exceed 100km/h it will send alarm message to admin and sos numbers via platform and sms) Speed value: 20-150km/h; Mode: 1-4: 1. Platform+SMS; 2. Platform+Call; 3. Platform+SMS+Call; 4. Platform only Default: 4
Vibration Alarm	vib,<level>,[mode]	Example: vib,3,3 (Means the sensitivity level of the tracker is 3, once the vibration alarm was triggered the alarm message will be sent to admin and sos numbers via platform, sms and call) Sensitivity Level: 1-9, 1 is the most sensitive; Mode: 1-4: 1. Platform+SMS; 2. Platform+Call; 3. Platform+SMS+Call; 4. Platform only Default: 4
Tow Alarm	tow,<distance(m)>,[mode]	Example: tow,300,1 (Means under ACC off status, if the tracker was moved 300m it will send alarm message to admin and sos numbers via sms) Tow distance 100-3000m; Mode:0-4: 0. Turn Off; 1. SMS; 2. Call; 3. SMS+Call; 4. Platform Default: 4
Engine On/Off Alarm	autorep123456,AB	Example: autorep123456,33 (Means both ACC on and off alarm already been enabled, the alarm message will be sent to admin and sos numbers via platform and sms) A=0 (Engine ON: No Alarm); A=1 (Engine ON: SMS only); A=2 (Engine ON:Platform only); A=3 (Engine ON: SMS+Platform) B=0 (Engine OFF: No Alarm); B=1 (Engine OFF: SMS only); B=2 (Engine OFF: Platform only);B=3 (Engine OFF: SMS+Platform)
Car Battery Low Voltage Alarm	lowalarm,<voltage>,[mode]	Example: lowalarm,12,1 (Means if the external voltage is less than 12v, the alarm message will be sent to admin and sos numbers via platform and sms) Voltage scope 5-100V; Mode:1-4: 1. Platform+SMS; 2. Platform+Call; 3. Platform+SMS+Call; 4. Platform only Default: 4
Power Off Alarm	pwr,A	Example: pwr,1 (Means when power off the alarm message will be sent to admin and sos numbers via platform and sms) A: Alarm ways 0-4: 0. Off; 1. Platform+SMS; 2. Platform+Call; 3. Platform+SMS+Call; 4. Platform only Default: 4

9. Any Questions?

E-mail: support@micodus.com

Skype: MiCODUS

10. Download the APP

Search "MiCODUS" in iOS APP store or Google Play Store, or just scan the QR code as below to download MiCODUS APP:



Download on the
APP Store



Download for
Android



HarmonyOS